

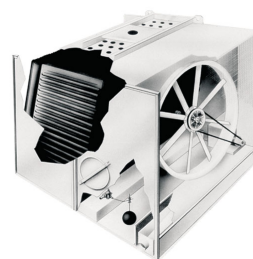
# Construction details

## Open cooling towers

### Construction details

#### 1. Material options

- Heavy-gauge hot-dip galvanized steel is used for external unit steel panels and structural elements featuring [Baltiplus Corrosion Protection](#).
- The unique [Baltibond® hybrid coating](#) is an optional extra. A hybrid polymer coating for longer service life, applied pre-assembly to all hot-dip galvanized steel components of the unit.



#### 2. Heat transfer media

- Our heat transfer media is patented [BACross fill](#) with integrated **drift eliminators** certified by Eurovent. In comprehensive [lab thermal performance tests](#) it showed proved thermal cooling tower performance and offers you unrivalled system efficiency.
- The fill pack includes individual **sheets** which are easy to dismantle for inspection and cleaning, eliminating the need for frequent fill replacement.
- In self-extinguishing **plastic**, which will not rot, decay or decompose.
- For operation above 50°C, try our **optional high temperature fill**, usable with intake water up to 55°C.



### 3. Air movement system

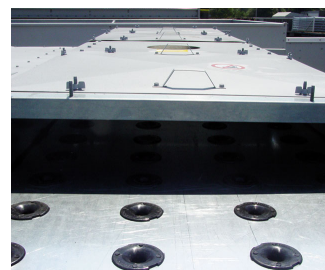
- FXT features a **V-belt-driven axial fan system**.
- The **low kW fan** fits in a fan cylinder for streamlined air entry and is mounted on a horizontal shaft supported by **heavy-duty ball bearings**. Together with the **extended lubrication lines** and the **moisture protected motor**, this guarantees optimal and year-round operational efficiency.
- Easy removable safety **screen** protects the fan system. Fan motor is accessible from outside the unit.



### 4. Water distribution system

These consist of:

- **Low pump gravity water distribution basin** with wide non-clog plastic nozzles for uniform water distribution. You can easily clean and flush both nozzles and basin.
- A **cold water basin** with: **circular access** door, anti-vortexing **strainers** and **make up** both easily accessible from air inlet side.



**Need more information?** Contact your local [BAC representative](https://www.baltimoreaircoil.eu/en/products/FXT-construction-details).